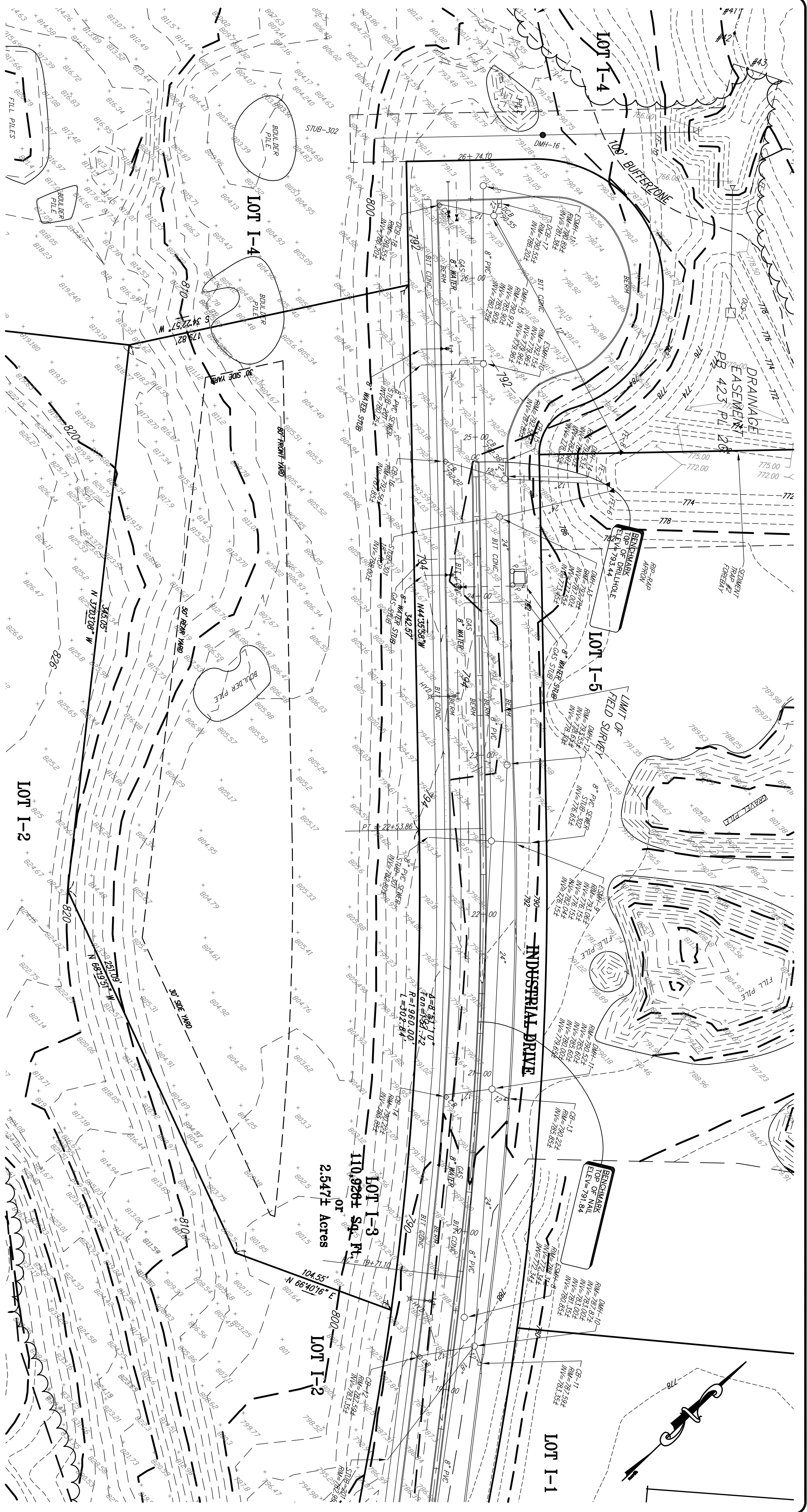


- REFERENCES:**
1. "LIMIT OF SURVEY" AS DESIGNATED ON THE PLAN PERFORMED AS AN ON THE GROUND SURVEY BY PRECISION LAND SURVEYING OF SOUTHBOROUGH, MASSACHUSETTS, BETWEEN JANUARY 1, 2004 TO JULY 31, 2004.
 2. EXISTING CONDITIONS FOR REMAINDER OF INDUSTRIAL DRIVE TAKEN FROM PLAN ENTITLED "THE WESTMINSTER BUSINESS PARK, A DEFINITIVE PLAN, WESTMINSTER, MASSACHUSETTS, PREPARED BY CFS ENGINEERING, DATED JANUARY 8, 2001, LAST REVISED SEPTEMBER 7, 2001, SHEETS 1 THRU 19 OF 19.
 3. REMAINDER OF EXISTING TOPOGRAPHY TAKEN FROM PLAN ENTITLED "A TOPOGRAPHICAL PLAN OF AN AREA IN WESTMINSTER, MASSACHUSETTS, PREPARED FOR PIONEER PROPERTIES, INC., DATED APRIL 26, 1987, SCALE 1"=100', PREPARED BY JAMES W. SEWELL COMPANY.
 4. PROPERTY BOUNDARY INFORMATION FOR INDUSTRIAL DRIVE TAKEN FROM PLAN ENTITLED "WESTMINSTER BUSINESS PARK, A DEFINITIVE PLAN, WESTMINSTER, MASSACHUSETTS, PREPARED BY CFS ENGINEERING, DATED JANUARY 8, 2001, LAST REVISED SEPTEMBER 7, 2001, SHEETS 1 THRU 19 OF 19.
 5. PROPERTY BOUNDARY FOR LOT 1-3 TAKEN FROM AIR PLAN ENTITLED "PLAN OF LAND FOR LOTS 1-2, 1-3, 1-4 AND 1-5, WESTMINSTER BUSINESS PARK, PREPARED BY PRECISION LAND SURVEYING, INC. OF SOUTHBOROUGH, MASSACHUSETTS, DATED AUGUST 18, 2004.



- REFERENCES:**
1. "LIMIT OF SURVEY" AS DESIGNATED ON THE PLAN PERFORMED AS AN ON THE GROUND SURVEY BY PRECISION LAND SURVEYING OF SOUTHBOROUGH, MASSACHUSETTS, BETWEEN JANUARY 1, 2004 TO JULY 31, 2004.
 2. EXISTING CONDITIONS FOR REMAINDER OF INDUSTRIAL DRIVE TAKEN FROM PLAN ENTITLED "THE WESTMINSTER BUSINESS PARK, A DEFINITIVE PLAN, WESTMINSTER, MASSACHUSETTS, PREPARED BY CFS ENGINEERING, DATED JANUARY 8, 2001, LAST REVISED SEPTEMBER 7, 2001, SHEETS 1 THRU 19 OF 19.
 3. REMAINDER OF EXISTING TOPOGRAPHY TAKEN FROM PLAN ENTITLED "A TOPOGRAPHICAL PLAN OF AN AREA IN WESTMINSTER, MASSACHUSETTS, PREPARED FOR PIONEER PROPERTIES, INC., DATED APRIL 26, 1987, SCALE 1"=100', PREPARED BY JAMES W. SEWELL COMPANY.
 4. PROPERTY BOUNDARY INFORMATION FOR INDUSTRIAL DRIVE TAKEN FROM PLAN ENTITLED "WESTMINSTER BUSINESS PARK, A DEFINITIVE PLAN, WESTMINSTER, MASSACHUSETTS, PREPARED BY CFS ENGINEERING, DATED JANUARY 8, 2001, LAST REVISED SEPTEMBER 7, 2001, SHEETS 1 THRU 19 OF 19.
 5. PROPERTY BOUNDARY FOR LOT 1-3 TAKEN FROM AIR PLAN ENTITLED "PLAN OF LAND FOR LOTS 1-2, 1-3, 1-4 AND 1-5, WESTMINSTER BUSINESS PARK, PREPARED BY PRECISION LAND SURVEYING, INC. OF SOUTHBOROUGH, MASSACHUSETTS, DATED AUGUST 18, 2004.

