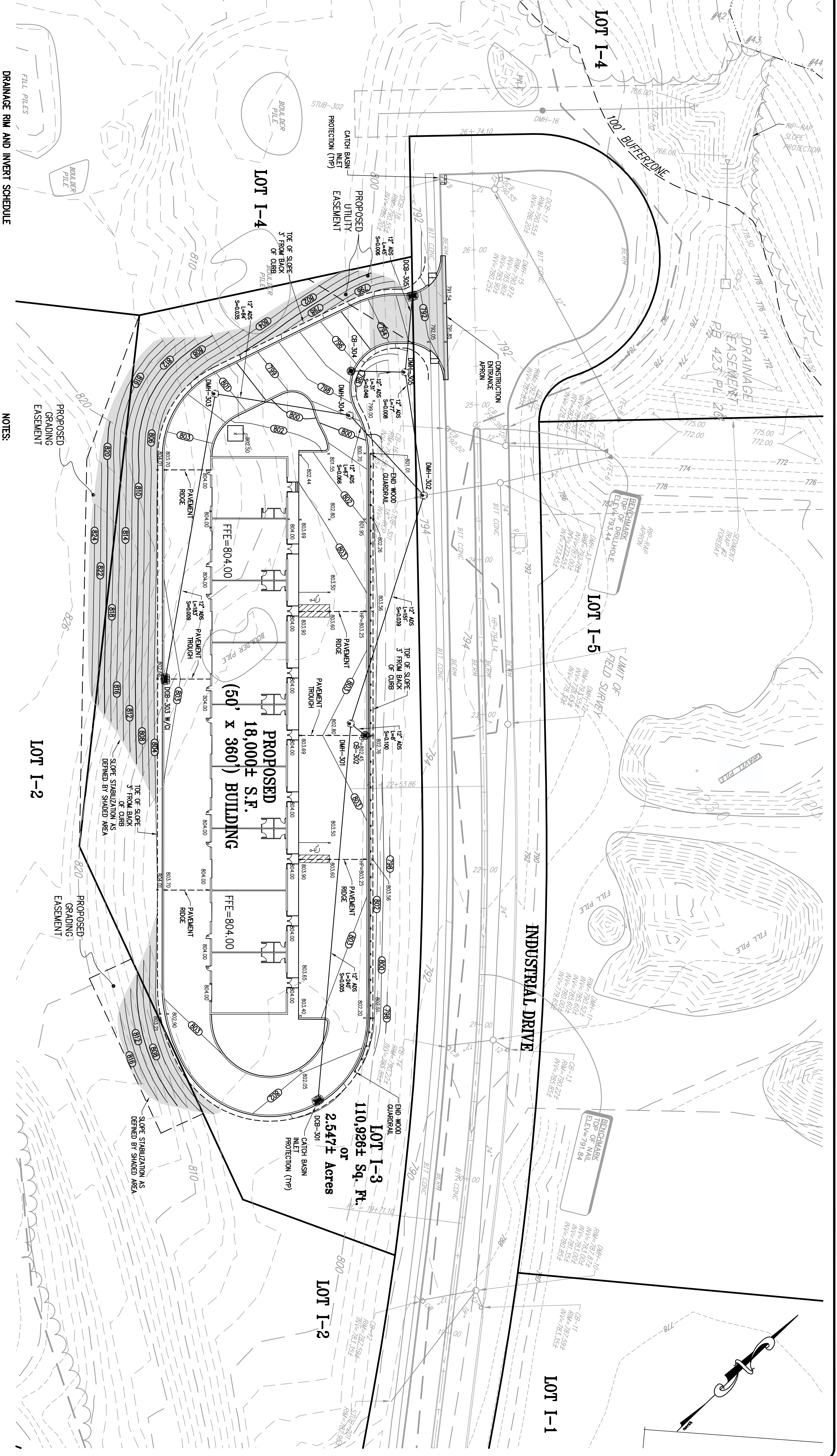


DRAINAGE RIM AND INVERT SCHEDULE

CB-302 RIM=802.45 INV OUT=798.25 (12" ADS TO DMH-301)	DMH-303 RIM=801.50 INV IN=797.75 (12" ADS FROM DCB-303) INV OUT=797.75 (12" ADS TO DMH-304)
CB-304 RIM=796.50 INV OUT=792.30 (12" ADS TO DMH-305)	DMH-304 RIM=799.00 INV IN=794.80 (12" ADS FROM DMH-303) INV OUT=794.20 (12" ADS TO DMH-302)
DCB-301 RIM=801.55 INV OUT=798.55 (12" ADS TO DMH-301)	DMH-305 RIM=795.00 INV IN=790.80 (12" ADS FROM CB-304) INV IN=789.10 (12" ADS FROM DCB-305) INV OUT=789.10 (12" ADS TO DMH-302)
DCB-303 RIM=802.35 INV OUT=799.35 (12" ADS TO DMH-303)	EDMH-13 RIM=792.78 INV IN=787.00 (18" RCP FROM DMH-302) INV OUT=773.45 (24" RCP TO EEE-6)
DCB-305 RIM=792.35 INV OUT=789.35 (12" ADS TO DMH-305)	EEE-6 INV OUT=772.50 (24" RCP FROM EDMH-13)
DMH-301 RIM=802.70 INV IN=797.45 (12" ADS FROM DCB-301) INV IN=795.75 (12" ADS TO DMH-302)	
DMH-302 RIM=794.00 INV IN=789.80 (12" ADS FROM DMH-301) INV IN=788.50 (12" ADS FROM DMH-305) INV OUT=788.00 (18" RCP TO EDMH-13)	



NOTES:
 1. MAXIMUM AMOUNT OF EARTH MATERIAL TO BE REMOVED FROM LOT I-3 AS PART OF THE BUILDING PERMIT IS LIMITED TO 2,000 Cu. Yds. EXCESS EXCAVATION MATERIAL TO BE RESPAVED ON WESTMINSTER BUSINESS PARK PROPERTY. GREATER THAN 2,000 Cu. Yds. MAY ONLY BE REMOVED FROM THE WESTMINSTER BUSINESS PARK PROPERTY AFTER OBTAINING A SPECIAL PERMIT FROM THE WESTMINSTER ZONING BOARD OF APPEALS.

